



Setting

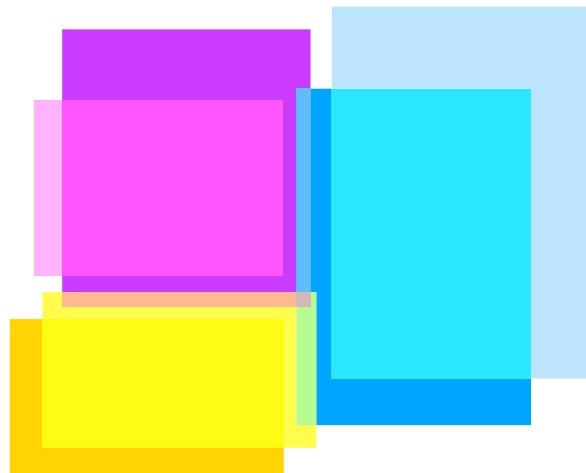


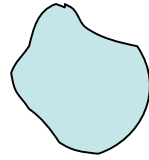
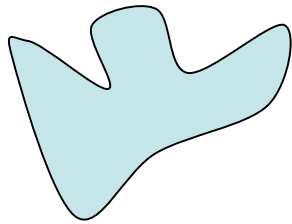
The time and location in which a story takes place is called the setting. For some stories the setting is very important, while for others it is not. There are several aspects of a story's setting to consider when examining how setting contributes to a story (some, or all, may be present in a story):

- a) place - geographical location. Where is the action of the story taking place?**
- b) time - When is the story taking place? (historical period, time of day, year, etc)**
- c) weather conditions - Is it rainy, sunny, stormy, etc?**
- d) social conditions - What is the daily life of the character's like? Does the story contain local colour (writing that focuses on the speech, dress, mannerisms, customs, etc. of a particular place)?**
- e) mood or atmosphere - What feeling is created at the beginning of the story? Is it bright and cheerful or dark and frightening?**

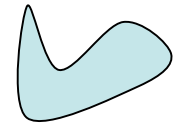
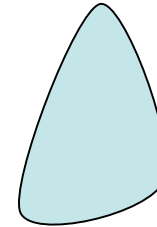
Setting

The setting is important because it often determines how characters will act, or it gives clues to how one might expect them to act.





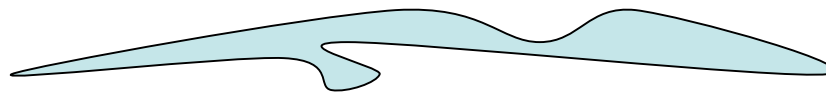
Setting



Mold:

The setting may shape characters and make them act the way they do.

Think of how the characters will differ depending on whether they grew up on a farm, in a tough, inner-city neighbourhood, or in a luxurious mansion. Typically, characters will act and react a certain way because of the setting in which they live. However, many characters will react against their setting and try to escape its mold.





Setting



Escape:

The setting can often be a fantasy-like escape, taking us to imaginary worlds, either in the past or the future.

But don't be easily fooled. Sometimes these escape settings are just a creative mirroring of our own world.



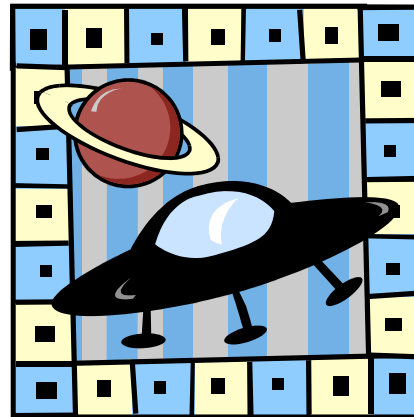


Setting



Alien:

Many times the setting will be hostile to the character who is an outsider, exiled, or a refugee. These types of settings emphasize the loss of roots and sense of home.





Setting



Mirror

The setting is a mirror image of the characters.

Example: The setting may be a wild jungle and all the characters are wild and uncivilized. The setting mirrors the characters.



The Functions of the Setting

- ❖ Provide a background for the actions
- ❖ Act as an antagonist
- ❖ Create atmosphere or moods (Tension, uneasiness)
- ❖ Reveal characters (Behavior and actions)
- ❖ Reinforce themes



The Setting can Effect

The characters: It can make them what they are, it can set up challenges

The reader: Uses the setting to set the tone, atmosphere, and mood. The setting can create a response in the reader.

Sometimes authors use different approaches to setting

Ex. It was a warm and sunny day

The morning was clear and sparkingly sunny, with the fresh warmth of a full-summer day.